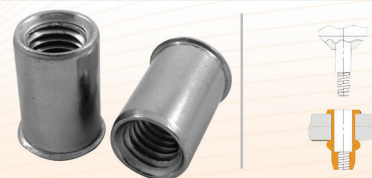




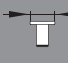

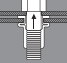
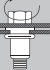



## HTR/E A2

Stal nierdzewna » otwarte » kołnierz mini stożek » gładkie

Stainless Steel » open end » mini countersunk head » smooth



Gwint Thread									kod		€ / 100szt.
M3	4,9	8,15	0,3-1,5	5,0	5,6	0,3			HTR/E-1,5 M3 A2	250	10,6
M4	5,9	9,4	0,5-2,5	6,0	7,0	0,6			HTR/E-2,5 M4 A2	250	14,2
M5	6,9	10,9	0,5-3,0	7,0	8,0	0,6			HTR/E-3,0 M5 A2	250	15,2
M6	8,9	13,4	0,5-3,0	9,0	10,0	0,6			HTR/E-3,0 M6 A2	250	18,4
M8	10,9	14,9	0,5-3,0	11,0	12,0	0,6			HTR/E-3,0 M8 A2	250	24,6
M10	11,9	17,2	0,8-3,0	12,0	13,5	0,8			HTR/E-3,0 M10 A2	100	41,0
	12,9	18,7	0,8-3,5	13,0	14,5	0,8			HTR/E-3,5 M10 A2	100	42,3