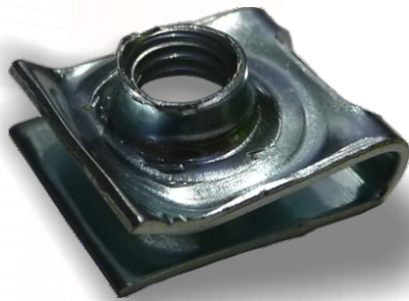


WSUWKI - SPRINGS

SERIA 200



Materiał: stal

Powłoka: fosforatowana, ocynk biały

Materials: steel

Surface: phosphated, zinc plated

Ø	Grubość blachy Sheets Thickness P	Kod produktu Reference	Wymiary - Dimensions					
			A	B	C	X	D ± 0,3	E
M4	0,5 - 1,5	HS BUT 204A	15,5	12,0	8,0	6,5	3,5	0,8
	1,6 - 2,0	HS BUT 204B						
M5	0,5 - 1,5	HS BUT 205A	15,5	12,0	8,0	6,5	3,5	0,8
	1,6 - 2,0	HS BUT 205B						
M6	0,5 - 1,5	HS BUT 206A	15,5	12,0	8,0	6,5	3,5	0,8
	1,6 - 2,0	HS BUT 206B						

