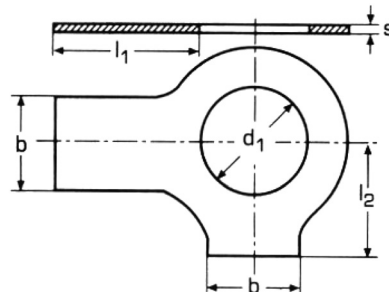


DIN 463 - PN 82022

Norma

Podkładki odginane dwułapkowe



MATERIAŁY:

- Stal
- Stal nierdzewna A2, A4
- Inne

POKRYCIA:

- Bez pokrycia
- Ocynk galwaniczny
- Inne na zapytanie

dla gwintu	M4	M5	M6	M8	M10	M12	M14	M16
d_1	4,3	5,3	6,4	8,4	10,5	13,0	15,0	17,0
l_1	14,0	16,0	18,0	20,0	22,0	28,0	28,0	32,0
l_2	6,5	8,0	9,0	11,0	13,0	15,0	16,0	18,0
b	5,0	6,0	7,0	8,0	10,0	12,0	12,0	15,0
s	0,38	0,5	0,5	0,75	0,75	1,0	1,0	1,0

dla gwintu	M18	M20	M22	M24	M27	M30	M33	M36	M39
d_1	19,0	21,0	23,0	25,0	28,0	31,0	34,0	37,0	40,0
l_1	36,0	36,0	42,0	42,0	48,0	52,0	56,0	60,0	64,0
l_2	20,0	21,0	23,0	25,0	29,0	32,0	34,0	38,0	41,0
b	18,0	18,0	20,0	20,0	23,0	26,0	28,0	30,0	32,0
s	1,0	1,0	1,0	1,0	1,6	1,6	1,6	1,6	1,6

* Wymiary w tabeli to wymiary standardowe

** Inne na zapytanie